

Assisted Living on Broadway

July 2020 Newsletter



Broadway Buzz

OUTDOOR VISITATION PROTOCOLS

We will be following Colo Health Dept guidelines to allow for outdoor visits with your family member during the month of July. Visits must be scheduled with the Administrator in advance and are limited to 2 people for no more than 30 minutes. Visitors will follow our current protocols of temperature check and symptom screening, and masks will be required (we can provide). Visits will take place in the secured outdoor area under the pavilion. Visitors will not be coming into the house. We need to submit our protocols to the State prior, so we will plan to start visits the week of July 12th. You can have 1 visit in July, and then we will assess the situation going forward. Again, thank you all for your cooperation and understanding. Please read through the CDPHE guidelines below so that you are aware of the requirements.

CDPHE GUIDELINES:

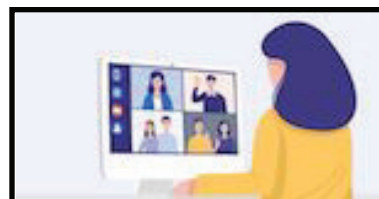
- The facility cannot have outdoor visitation if the facility had any recent positive cases or outbreaks and has not completed the required isolation period of 14 days. Facilities with active cases are not allowed to offer visits.
- All visits must be scheduled. Prior to the visits, facilities must provide information about COVID-19, and instructions for self-screening on the day of the visit, social distancing and mask-wearing, and details about the visit.
- The visitor must be greeted outside at a designated area by facility staff, and the staff member will perform temperature check and symptom screening in accordance with current CDC guidelines. Visitors with symptoms in the previous 14 days should not be allowed visitation. Residents who are in isolation or quarantine related to COVID-19 or have symptoms related to COVID-19 may not participate in outdoor visitation.
- All visitors must wear a face mask or cloth face covering. All staff and the resident must wear a surgical or cloth mask unless doing so would inhibit the resident's health.
- Visitors must supply name and contact information to facilities for contact tracing.
- Facilities must establish a separate designated meeting area outdoors for these visitations. The facility should ensure that residents not participating in visits continue to have access to outdoor space. This area must be monitored to ensure it remains separated from the facility population and staff.
- There can be no more than eight people (including resident, staff, and visitors) in the gathering, or the number determined by using the Social Distancing Calculator, whichever is smaller. The allowable number of visitors should be documented in the visitation plan.
- Furniture used for external visits should be appropriately cleaned and disinfected between visits.
- Each facility must document their outdoor visitation policies and add it to their isolation plan.

FAMILY MEETING

The family meeting this quarter will be held by video or phone over Zoom. Information and link will be sent by email at least a week before the meeting. If you haven't used Zoom, you can contact Patty at info@albroadway.com for info.

Important
DATE!

Tues. July 28th
5:30 PM
via ZOOM



Activities

Even though we can't bring in outside activities and entertainers right now, we are still maintaining activities at the house.



We are happy to have Susan back at the house doing activities!

July 2020 Activities Calendar

Sun	Mon	Tue	Wed	Thu	Fri	Sat
<p><i>Assisted Living on Broadway</i></p>			1	2	3	4
			AM - Sit & Be Fit w/ Susan PM - Coloring Art	AM - Bingo PM - Book Club	AM - Walk PM - Dice Game	
5	6	7	8	9	10	11
Sunday Walk	AM - Exercise w/ Marlene PM - Memory Game	AM - Finish the Phrase PM -	AM - Sit & Be Fit w/ Susan PM - Dominoes	AM - Sorting PM - Painting	AM - Baking PM - Card Games	Move & Popcorn
12	13	14	15	16	17	18
Sunday Walk	AM - Exercise w/ Marlene PM - Coloring Art	AM - Beach Ball Toss PM - Parachute	AM - Sit & Be Fit w/ Susan PM - Uno	AM - PM - Memory Game	AM - Coloring Art PM - Book Club	Corn Hole
19	20	21	22	23	24	25
Sunday Walk	AM - Exercise w/ Marlene PM - Dice Game	AM - Sorting PM - Puzzles	AM - Sit & Be Fit w/ Susan PM - Bingo	AM - Bean Bag Toss PM - Bc Games	AM - Arts & Crafts PM - Walk	Checkers Tournament
26	27	28	29	30	31	
Sunday Walk	AM - Exercise w/ Marlene PM - Book Club	AM - PM - Toss n Talk	AM - Sit & Be Fit w/ Susan PM - Crosswords	AM - PM - Coloring Art	AM - Sorting PM - Painting	